

# HOT TUB COVER MEASURING GUIDE



## Items you will need when measuring your hot tub cover:

Tape Measure  
Pencil  
Framing Square or Straight Edge for the hot tub radius

---

## Measuring your old cover or the hot tub?

Measure your old cover if all of the following is TRUE:

Cover is not warped or has changed size in any way.  
You are satisfied with how the cover fits.  
You are confident in how to measure.

## If any of the above is NOT true, then STOP and CONTACT US

Please write down the following information:

Hot Tub Manufacturer: \_\_\_\_\_

Hot Tub Model: \_\_\_\_\_

Hot Tub Year: \_\_\_\_\_

Once you have all the information on the hot tub, Call into our Service Dept for Assistance at 401-295-7721.

---

## When measuring

Write all measurements in inches, not feet. Measuring correctly is very important. A cover that is slightly larger than the spa by even 1-2" will fit and function just fine, however a cover that is too small will impact heat retention, etc. Please double check all measurements for accuracy. If you need assistance in measuring for a new hot tub cover, please give our Service Department a call at 401-295-7721.

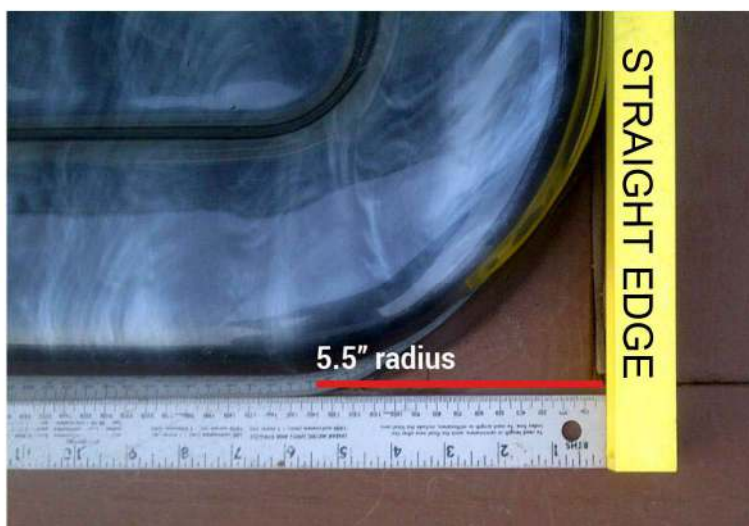
## Have rounded corners? How to determine corner radius.

To measure the radius, your hot tub must have straight sides.

**NOTE:** You might consider specifying a slightly smaller radius. A smaller radius will extend the cover out farther past the corner of the hot tub. For instance a 1/2" less radius extends the cover 1/4" farther. A smaller radius will ALWAYS fit over the spa corner just fine, however a radius too large, may not extend the cover far enough out to fit.

Square corners have a radius of 0.

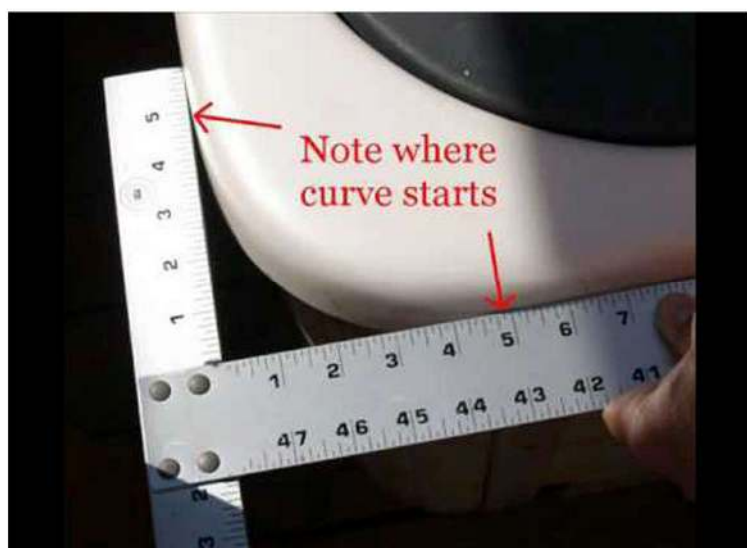
Hot Tub radius measurement is: \_\_\_\_\_



### Using a Straight Edge & Ruler

Place the straight edge such as wood, cardboard or anything with a straight edge firmly against the hot tub's rim at the corner and a ruler or tape measure perpendicular to the straight edge. The radius is the measurement between the straight edge and the point where the hot tub corner first touches with the ruler as seen in the photo to the left.

The radius is 5.5" so the measurement would be rounded DOWN to 5".



### Using a Carpenter's Square

Begin by placing the square firmly against the hot tub's rim at the corners as show to the left. Note where the curve starts. The radius is the measurement between the inside corner of the square and where the curve of the spa corner first touches the square.

The radius is 5.0" so the measurement would be rounded DOWN to 4.5"



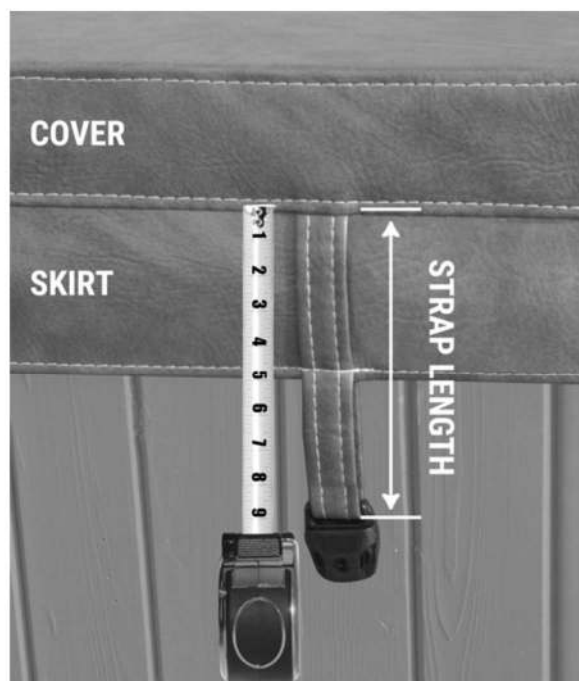
## Measuring the Skirt and Strap Length



The skirt is the overhanging flap that extends from the bottom of the hot tub cover. The skirt on Acrylic hot tubs should cover the exposed lip of the shell plus about 1/2" more to protect the acrylic from UV rays. Round measurement up to even inches.

The minimum skirt length is 2". The common skirt length is 5". Covers can also be made with no skirt which would be a 0" for skirt length.

**Cover Skirt Length is:** \_\_\_\_\_



**Measure Strap Length:** The strap length is measured from the bottom of the cover which is the top of the spa's rim to the top of the latch, as illustrated. In our example, the straps are 9" long, extending 4" below the skirt. The strap must extend at least 2" or more below the bottom edge of the skirt.

**DO NOT** measure from bottom of skirt  
**DO NOT** include the latch in measurement.

**Hot Tub Strap Length is:** \_\_\_\_\_

**NOTE:** Straps are required for safety. the strap The location of the strap can not be guaranteed by cover manufacturer. Because of this, new latches and mounting hardware is provided.